



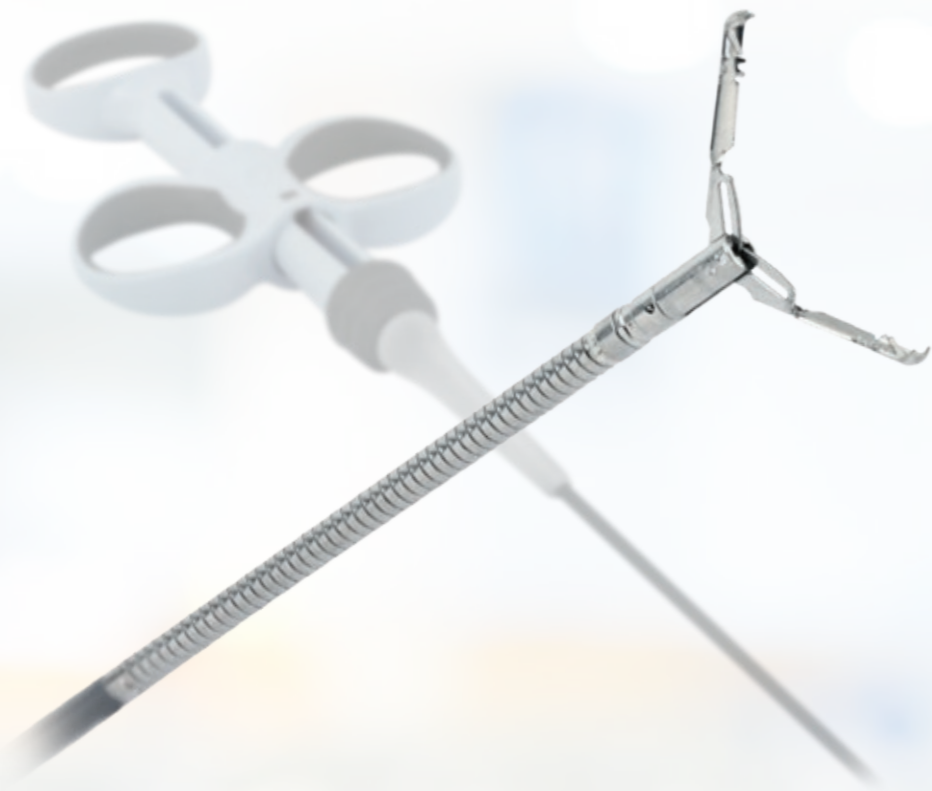
MICRO-TECH™  
ENDOSCOPY



# HEMOSTASIS

CLIPS, NEEDLES AND LIGATION-SYSTEMS

YOUR TRUSTED PARTNER IN ENDOSCOPY



# LOCKADO™

## STRONGER HOLD, MORE CONTROL

The LOCKADO™ was designed by MICRO-TECH to stop bleeding more efficiently. The main reason for this is the increased compression pressure. Thanks to the improved locking force, the clip is also suitable for treating large lesions, defects and tumor tissue by providing a reliable grip. The hold is enhanced by ten teeth, six of which are positioned laterally. They ensure optimal inclusion and

retention of the tissue. Repeated positioning before clip final deployment enables more precision and flexibility. The clip segment protruding into the lumen is particularly short and thus reduces the risk of injuries to the opposing tissue. The range includes four models with different span widths, so that you always have the right clip size to choose from for all needs and applications.

### SPECIFIC CHARACTERISTICS

- Maximum span of up to 20mm
- Stop bleeding quickly and safely
- Increased compression pressure
- Ten teeth ensure ideal hold
- Repeated opening and closing before fixation
- Good fixation due to better adaptation of tissue
- Reliable closure for large defects
- Short clip segment for minimized tissue damage
- Precise control even in angled areas
- Reliable 360° bidirectional rotation
- 1:1 Transfer
- MRI ready



The short clip section protrudes only a few millimeters into the lumen, thus sparing the tissue on the opposite side.



The clip can be rotated with precision, both to the left and to the right. Even the most minute movements of the handle are transmitted with precision.



The LOCKADO™ range includes clips with different spans: 8, 11, 16mm, and now also the LOCKADO™ G-Type with a span of 20mm.

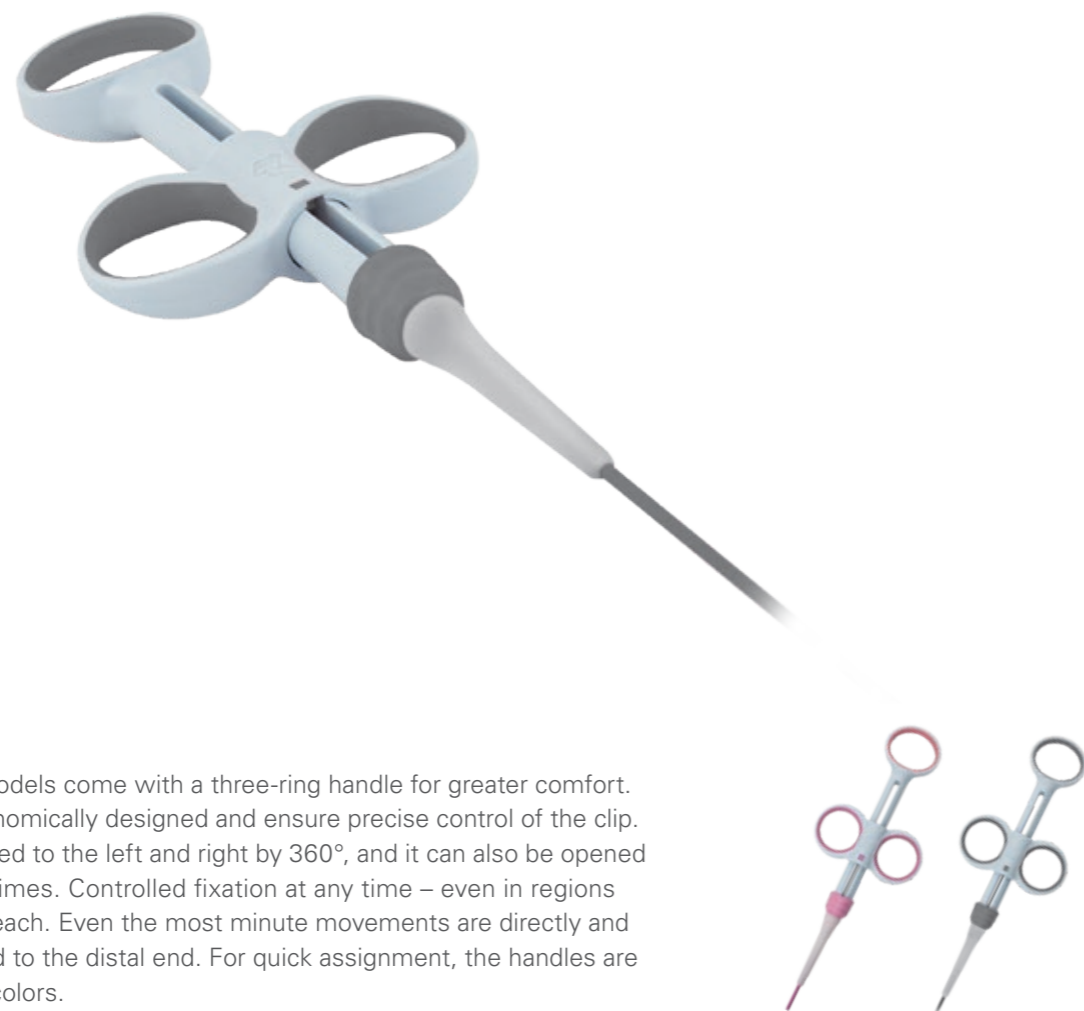
# LOCKADO™ G-TYPE

## QUALITY IN A NEW SIZE

With the LOCKADO™ G-Type, MICRO-TECH has set a new standard for clip-based hemostasis. Its span of 20mm can enclose a particularly large amount of tissue, so that even larger lesions, defects and tumors can be treated with just a few clips. In addition to ten teeth, the LOCKADO™ G-Type clips are also equipped with two hooks, which help to hold the tissue in place and offer optimal support during fixation.



10 TEETH FOR MORE HOLD



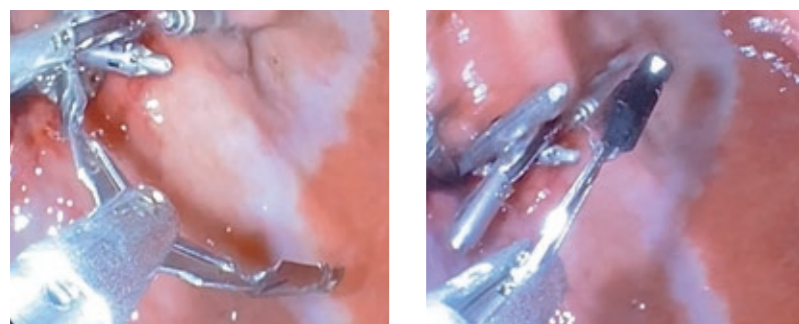
### PRECISE CONTROL

The LOCKADO™ models come with a three-ring handle for greater comfort. All handles are ergonomically designed and ensure precise control of the clip. The clip can be rotated to the left and right by 360°, and it can also be opened and closed several times. Controlled fixation at any time – even in regions that are difficult to reach. Even the most minute movements are directly and precisely transmitted to the distal end. For quick assignment, the handles are marked in different colors.

### SPECIFICATIONS

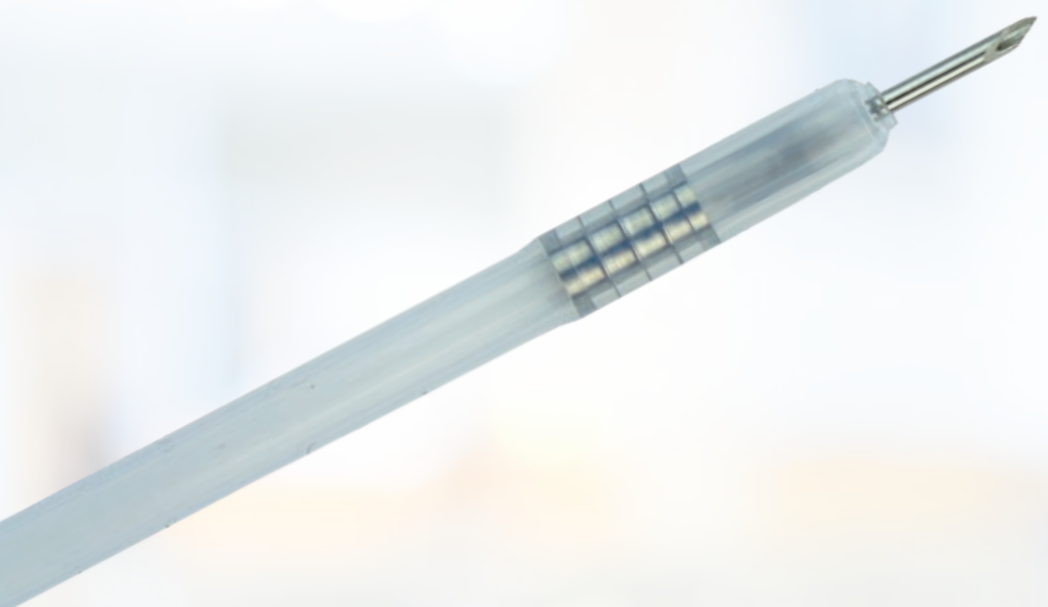
REF	Clip max. span width mm	Length mm	Clip angle	Instrument Ø mm	Grip color	Covering
<b>LOCKADO™ G-Type</b>						
LOCK-G-26-195-C	20	1950	135°	2.6	Grey	Grey
LOCK-G-26-230-C	20	2300	135°	2.6	Grey	Grey
<b>LOCKADO™</b>						
LOCK-C-26-195-C	8	1950	135°	2.6	Pink	Pink
LOCK-C-26-230-C	8	2300	135°	2.6	Pink	Pink
LOCK-D-26-195-C	11	1950	135°	2.6	Blue	Blue
LOCK-D-26-230-C	11	2300	135°	2.6	Blue	Blue
LOCK-F-26-195-C	16	1950	135°	2.6	Yellow	Yellow
LOCK-F-26-230-C	16	2300	135°	2.6	Yellow	Yellow

Packing unit: 10 pcs.



### VERSATILE APPLICATIONS

- Closure after POEM therapy
- Closure after Zenker's diverticulotomy
- Adaptation of wound edges according to ESD



# INJECTION NEEDLE

## RELIABLE AND SAFE TO THE TIP

The disposable MICRO-TECH's disposable injection needle facilitates clinical practice due to its ergonomic handle and especially sharp needle. The anti-skid design guarantees convenient control with just one hand. For

even more precise punctures the handle can be locked in several stages. When the needle is released, it snaps back into the catheter to avoid damage to the working channel.

### SPECIFIC CHARACTERISTICS

- Ergonomic anti-slip handle
- Adjustable pressure pad
- Automatic needle-feed
- Soft, atraumatic silicone head
- Needle with extremely sharp, precision cut
- Different needle diameters
- LL needle connector

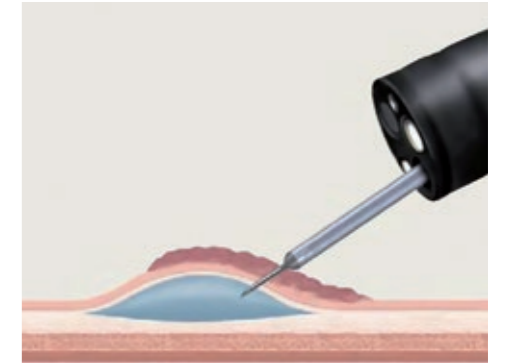


### SPECIFICATIONS

REF	Needle stroke mm	Needle Ø	Working length Ø mm	Length mm
<b>INJECTION NEEDLE - POLYPECTOMY/EMR</b>				
IN12-195232302	5	19 G = 0.9 mm	2.8	2300
IN12-225232302	5	22 G = 0.7 mm	2.8	2300
IN12-255232302	5	25 G = 0.5 mm	2.8	2300
<b>INJECTION NEEDLE - ESD</b>				
IN12-224232302	4	22 G = 0.7 mm	2.8	2300
IN12-254232302	4	25 G = 0.5 mm	2.8	2300

Packaging unit: 10 pieces

Also available in other versions



# SAFETY NEEDLE SN

## PRECISION WITH A UNIQUE SAFETY CONCEPT

With the injection needles from bauer medical, punctures are safe and precise. On one hand, it is the newly developed handle with a particularly ergonomic shape which ensures a tactile feeling and an audible locking. On the other hand, it is the special bevel-style grinding of the needle, allowing for precise punctures, even under difficult

conditions. Matching the specifications of the UVV for enhanced safety, this injection needle provides even more protection: Upon completion of the application, the proximal handle can be kinked at a defined breaking point. The forced retention of the needle in the tip of the catheter helps to avoid injuries.

### SPECIFIC CHARACTERISTICS

- Handle with tactile ergonomics
- Needle with special bevel-style grinding
- Distal protector head for needle tip
- CLICK noise when inserting and retracting the needle
- Unique safety concept for non-injurious disposal
- Needle diameter of 0.5 / 0.7 / 0.9 mm



### SPECIFICATIONS

REF	Needle stroke mm	Needle Ø mm	Tube Ø mm	Length mm
<b>INJECTION NEEDLE SAFETY NEEDLE SN</b>				
SN1-I10-505-18-120	5	0.5	1.8	1200
SN1-I10-505-18-180	5	0.5	1.8	1800
SN1-I10-507-23-230	5	0.7	2.3	2300
SN1-I10-509-23-230	5	0.9	2.3	2300

Packaging unit: 10 pieces, relay prices on request





# MULTIBAND LIGATION-SYSTEM

## EASY, RELIABLE, LATEX FREE

The MICRO-TECH multiband ligating system is suitable for the effective treatment of bleedings in esophageal varices and anorectal hemorrhoids. The complete system is preloaded for 4 or 6 ligations and can be easily installed.

The silicone cap provides a clear view and a reliable suction of tissue. It is the only system also available in a latex-free variant, which significantly reduces the risk of an allergic reaction in sensitive patients.

### SPECIFIC CHARACTERISTICS

- Easy assembly and handling
- Suitable for endoscopes of 9.4 to 14.0 mm in diameter
- For minimum working channels of 2.8 mm diameter
- With flush attachment
- Preloaded for 4/6 ligations
- Ligation-design with or without latex



Silicone cap with release thread

Latex cap with release thread

### SPECIFICATIONS

REF	Soft cap Ø mm	Endoscope Ø mm	X-shooter	Thread length mm	Thread color
<b>LATEX</b>					
MBLS-6F	8.8	9.4 – 13.0	6	1450	Blue/transparent
MBLS-4F	8.8	9.4 – 13.0	4	1450	Blue/transparent
MBLS-XL-6F	9.8	11.0 – 14.0	6	1900	Blue/transparent
MBLS-XL-4F	9.8	11.0 – 14.0	4	1900	Blue/transparent
<b>LATEX FREE</b>					
MBLS-6F-NL	8.8	9.4 – 13.0	6	1450	Yellow/black
MBLS-4F-NL	8.8	9.4 – 13.0	4	1450	Yellow/black
MBLS-XL-6F-NL	9.8	11.0 – 14.0	6	1900	Yellow/black
MBLS-XL-4F-NL	9.8	11.0 – 14.0	4	1900	Yellow/black

Packaging unit: 1 piece, relay prices on request

# NOTES



